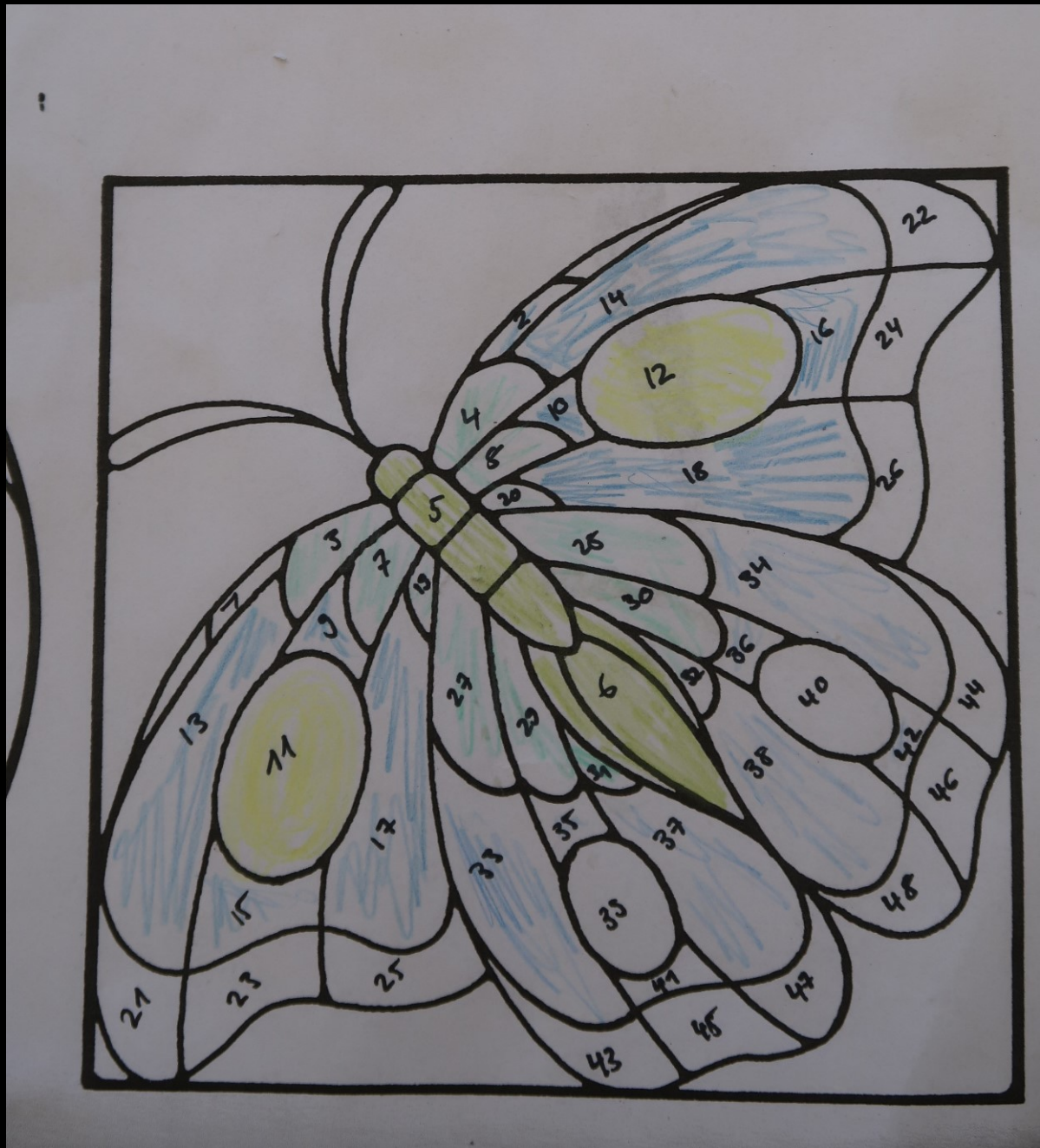
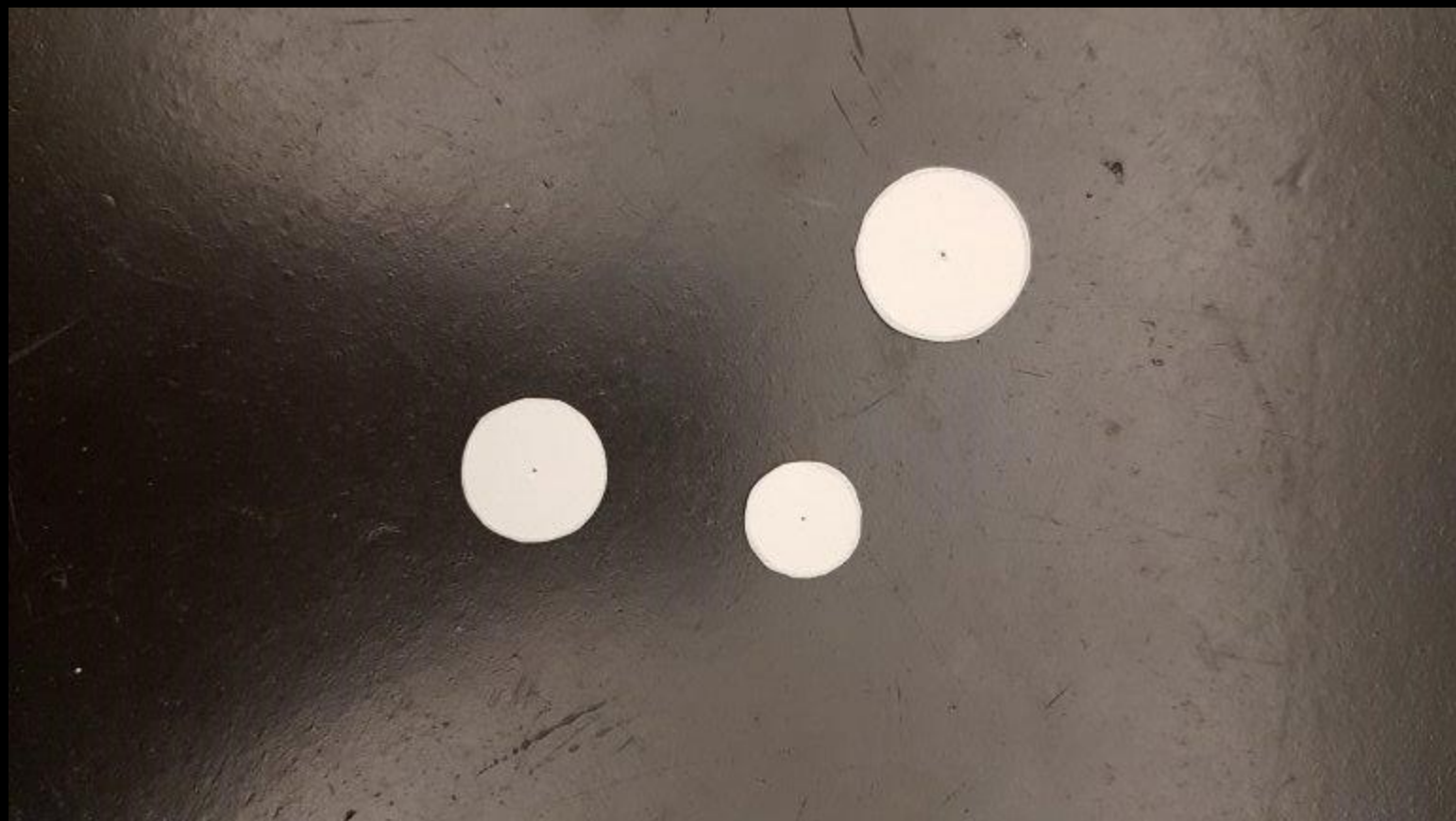


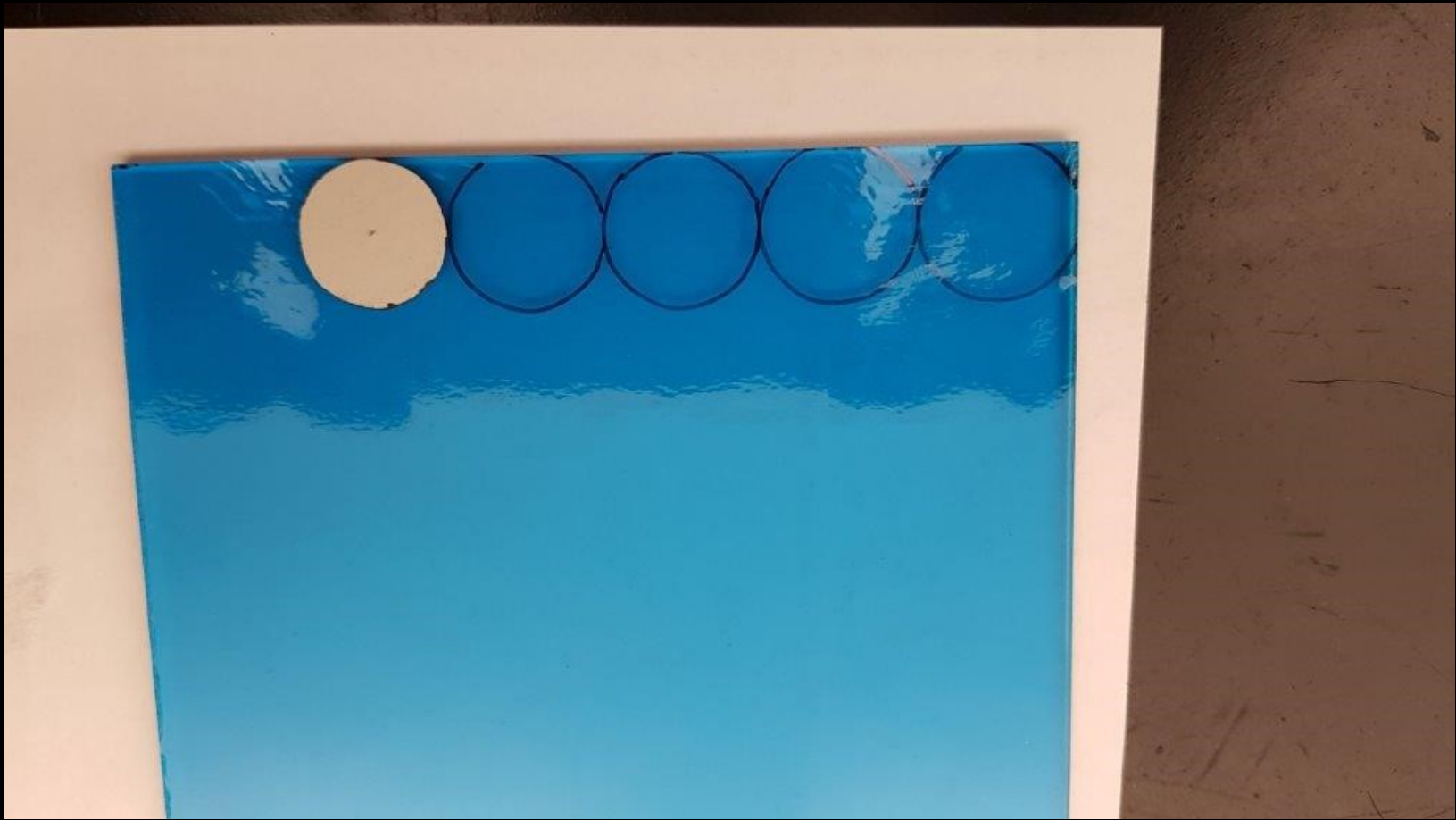


Scherben und Gnade



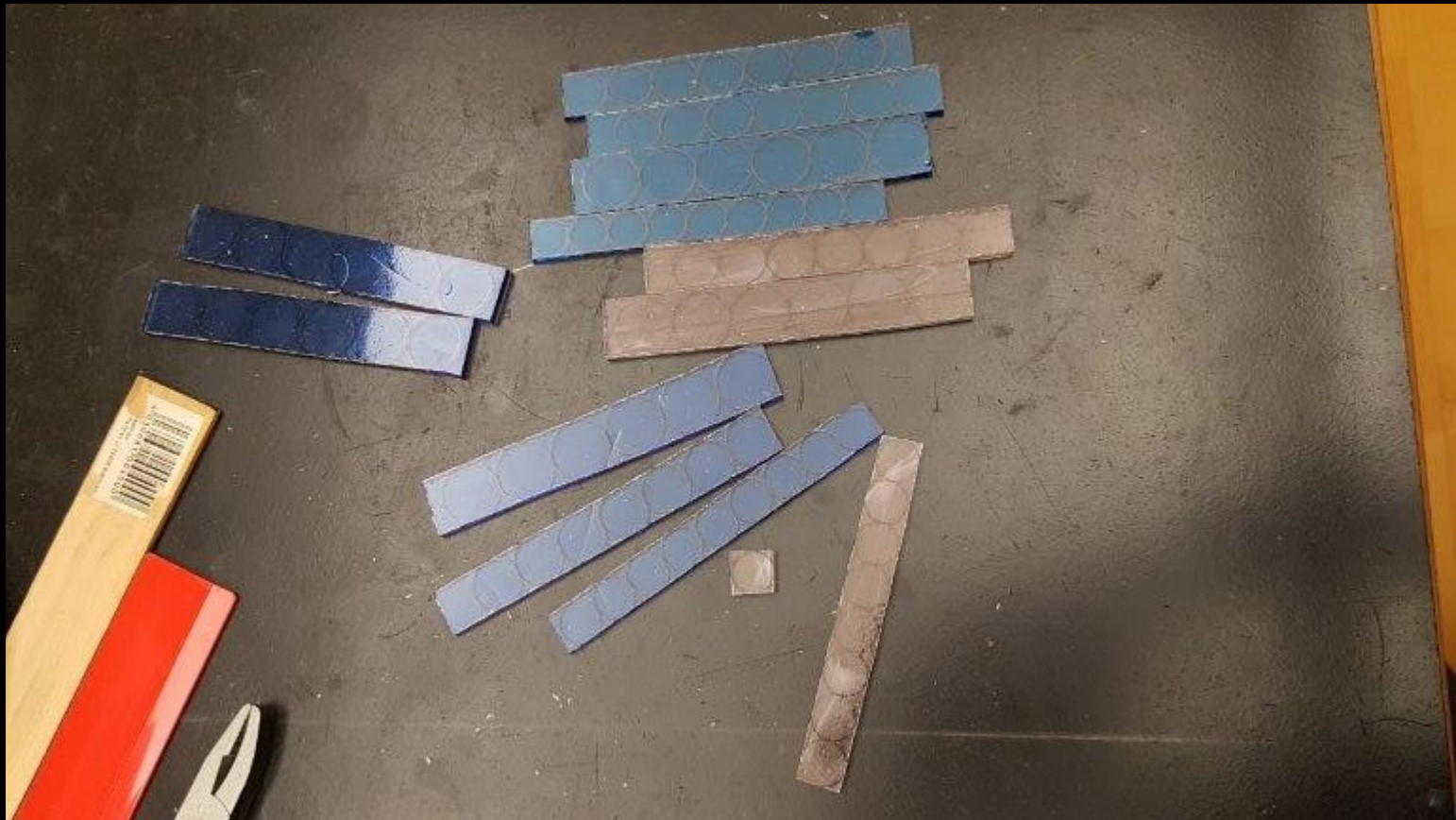






51 52 53 54 55





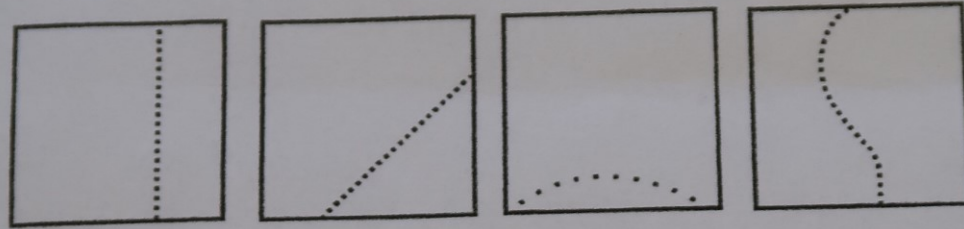






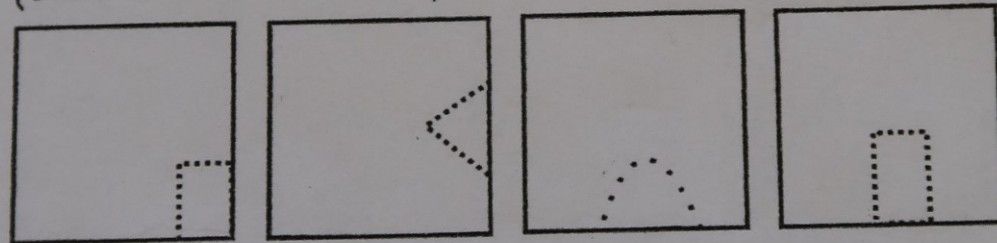


Mögliche Glasschnitte mit dem
Glasschneider:



Nicht mögliche Glasschnitte mit dem
Glasschneider:

Diese Schnitte mit der Säge vornehmen
(siehe Punkt Nr. 4)

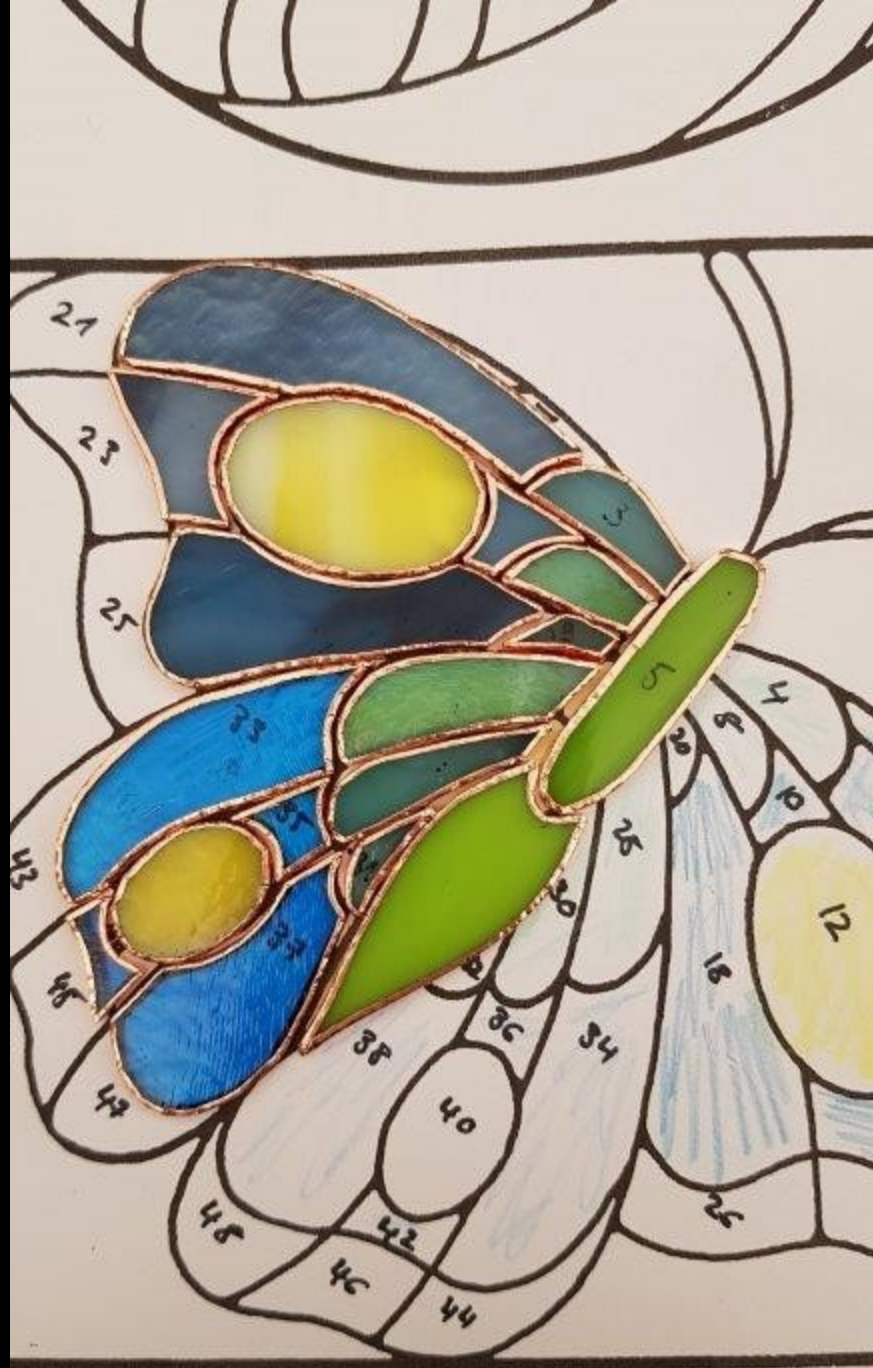








Handwritten signature or initials.









[Faint, illegible handwriting]











